

# State of Wyoming Corner Record

(In compliance with the *CORNER PERPETUATION AND FILING ACT*, Wyoming Statutes, 1997 Section 33-29-140 et. seq., and the Rules and Regulations of the Board of Professional Engineers and Professional Land Surveyors)

Reverse side of this form may be used if more space is needed.

Record of original survey and citation of source of historical information (if corner is lost or obliterated). Description of corner monumentation evidence found and/or monument and accessories established to perpetuate the location of this corner. Sketch of relative location of monument, accessories, and reference points with course and distance to adjacent corner(s) (if determined in this survey). Method and rationale for reestablishment of lost or obliterated corner.

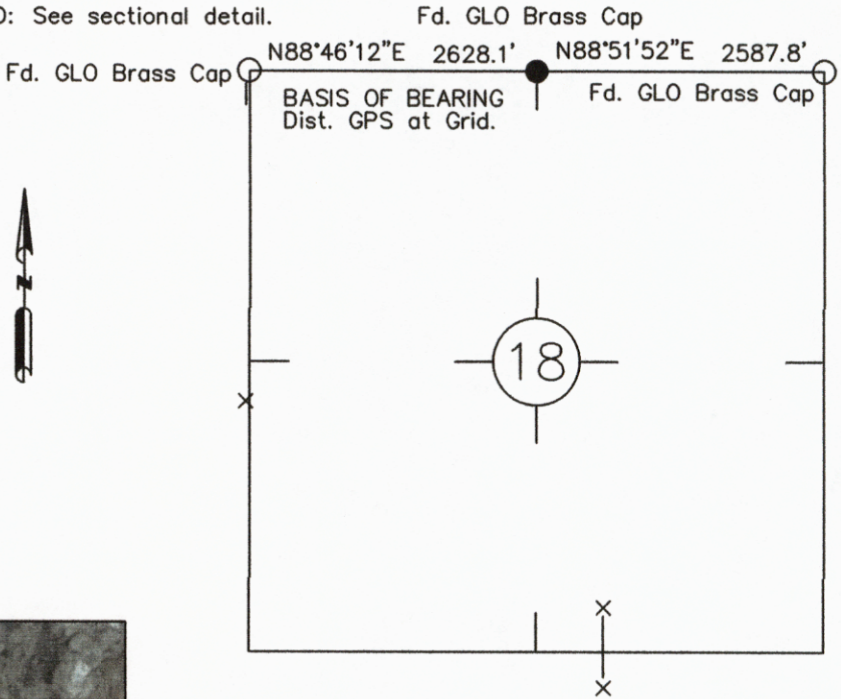
LOCATION: North 1/4 Corner, S. 18, T.12N., R.63W., 6th P.M., Laramie County, Wyoming.

ORIGINAL RECORD: Set an iron post, 3 ft. long, 1 ins. diam., 2 1/2 ft. in the ground, for 1/4 sec. cor., and mark on the brass cap on the post.

FOUND: Bent 2.5" GLO Brass cap.

MONUMENT AND ACCESSORIES ESTABLISHED: See sectional detail.

Origin: N000000.00, E656166.66  
 H. Datum: NAD83 (2011)  
 V. Datum: GEOID 12A Zone: Wyoming East  
 Scale Factor: 0.9999790660  
 Elevation: 5527.97  
 Elevation Factor: 0.9997390390  
 North: 188704.65 East: 846860.38



Date of Field Work: 5/6/2014

Office Reference: APC

Project Point No.: 100554

## Cross Index Plat

	1	2	3	4	5	6	7	8	9	10	11	12	13	14	15	16	17	18	19	20	21	22	23	24	25		
A																											A
B																											B
C			6			5				4					3					2							C
D																											D
E																											E
F																											F
G																											G
H																											H
J																											J
K																											K
L																											L
M																											M
N																											N
O																											O
P																											P
Q																											Q
R																											R
S																											S
T																											T
U																											U
V																											V
W																											W
X																											X
Y																											Y
Z																											Z

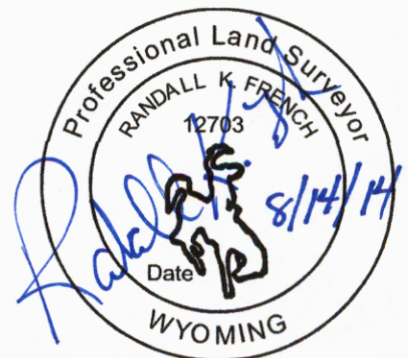
Firm/Agency, Address

PETROLEUM FIELD SERVICES  
800 Werner Court, #185  
Casper, WY 82601

Telephone Number: 303-928-7128

This corner record was prepared by me or under my direction and supervision.

*SEAL & SIGNATURE*



Corner Name North 1/4 Corner Section 18, T 12 N, R 63W, 6th P.M.

Cross-Index No.: J-3

County: Laramie Wyoming

SBRPEPLS/PLSW: March 1994; PLSW January 1998